



Ashton Cabin



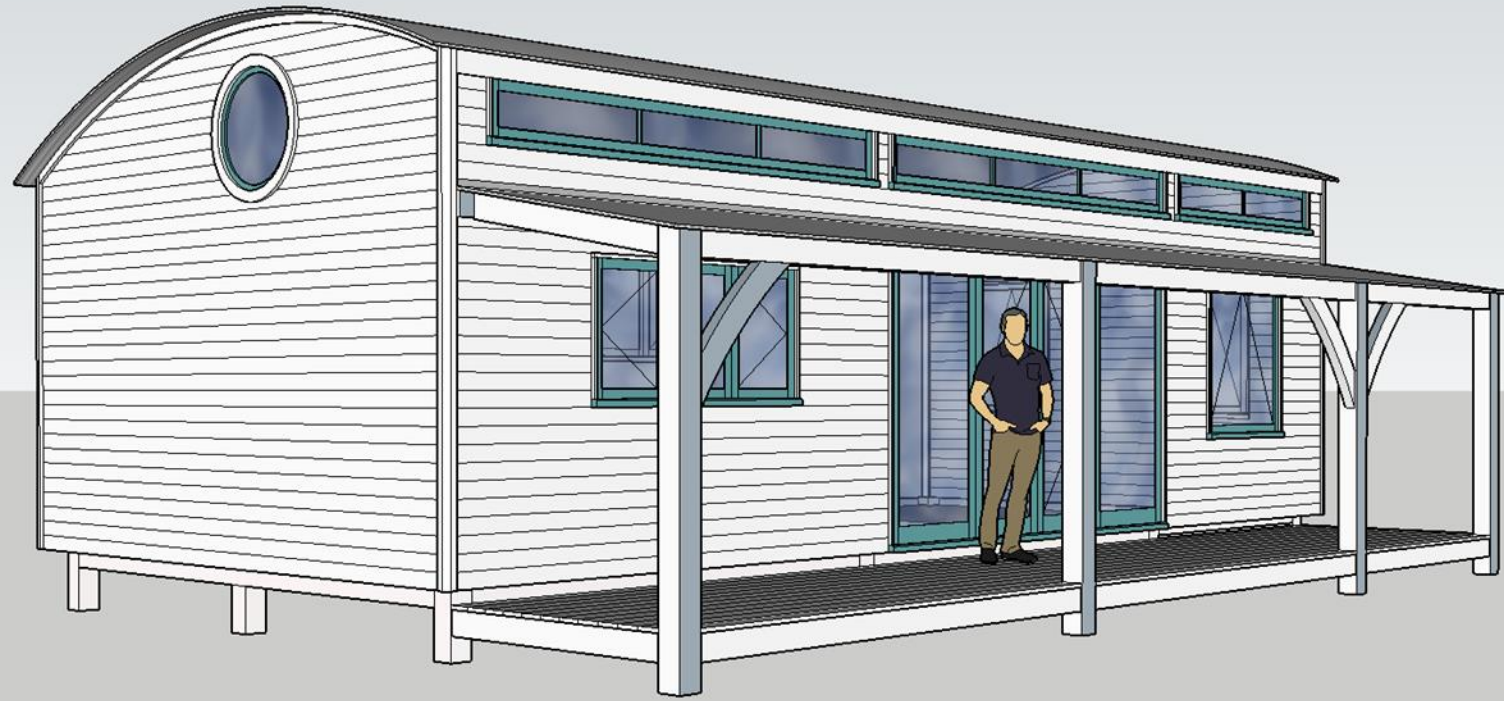
Based in the heart of Devon, The Cabin Company design and manufacture unique timber structures from locally sourced wood, ideal for living, holiday and work space. Our ethos is to provide high quality work using beautiful timber, for a fair and sensible price.

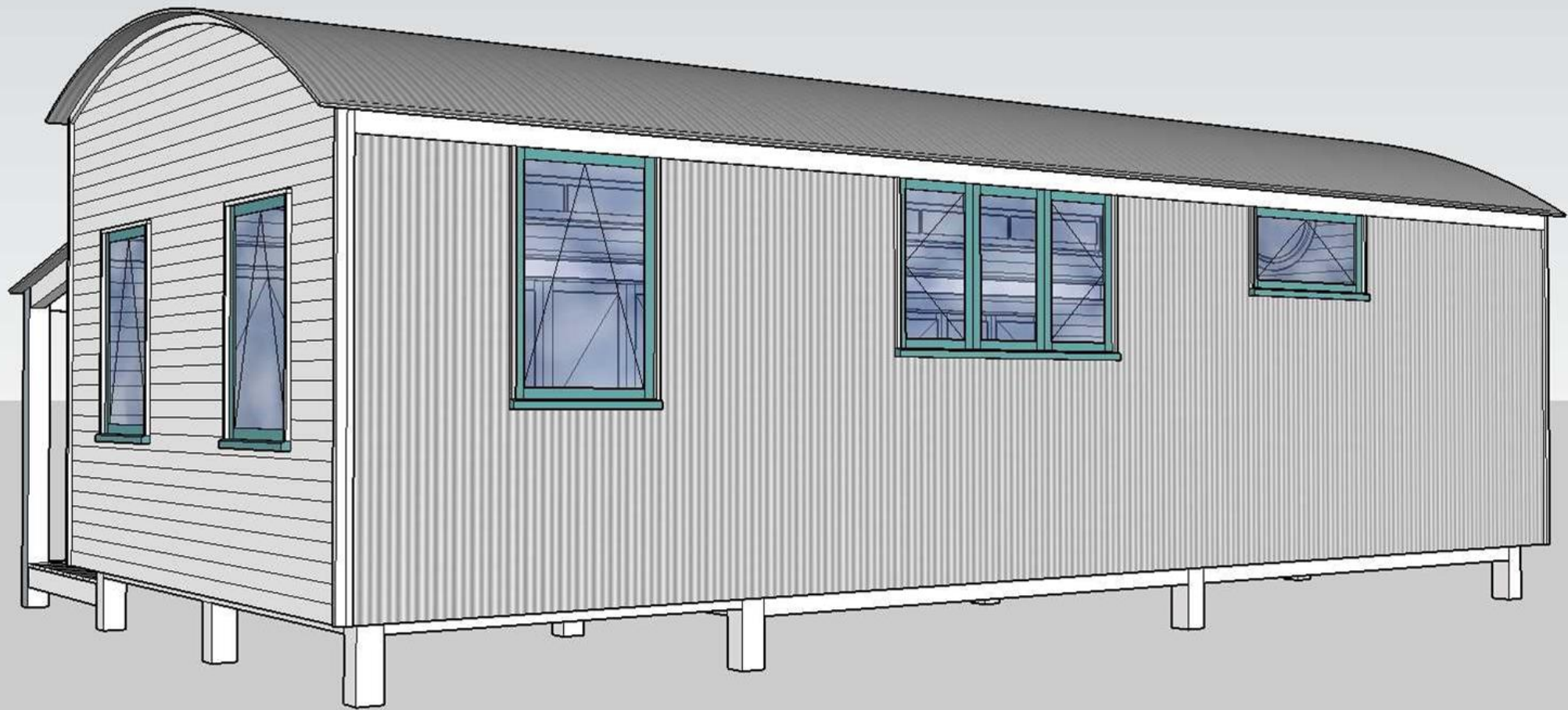
This brochure is for a bespoke timber-frame cabin made from Douglas fir and larch with exposed internal beams and purlins, birch ply walls, wood-burner, shower room with toilet, sleeping platform, insulated throughout and finished with high quality wooden windows.

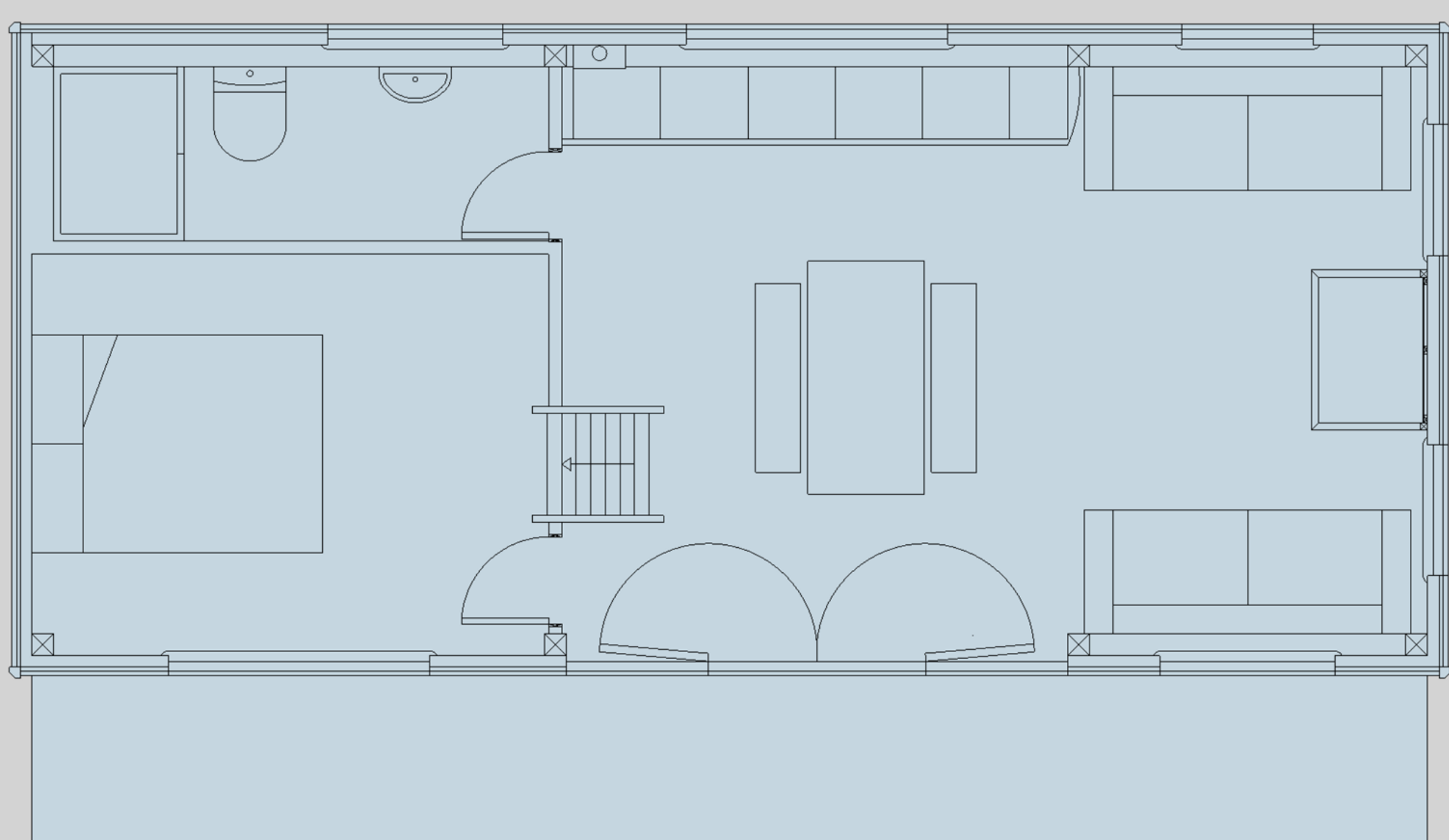
Our work is fully regulated, using professional contractors for all services and providing all the necessary certificates, offering peace of mind when purchasing a structure from us















Specification

- 9.6m x 4.5m timber framed cabin made from local Douglas fir & larch with 4.2m mezzanine sleeping platform
- 1.8m x 8.5m detachable solid timber frame veranda with straight galvanised tin
- Roof constructed of - Heavy duty laminate curved beams and purlins | 6mm ply treated with hard wax oil | 100mm Earthwool insulation | breather membrane | curved galvanised corrugated tin roof | Lindab dark grey guttering and downpipes to the front
- Walls constructed of - Heavy solid timber frame made using traditional mortis and tennon method | 9mm Ecoboard primed and painted with Dulux trade colour of choice (T & G below dado, plane above) | 70mm tanalised studs | 100mm Earthwool acoustic and thermal insulation | 9mm structural ply boarding | breathable membrane | Ex32mm locally sourced Douglas fir / larch Featheredge cladding treated with Cuprinol garden shades colour of choice | Back wall to be corrugated galvanized steel
- Floor constructed of - 9mm structural softwood ply | 175mm tanalised floor joist's | 200mm Earthwool insulation | 18mm structural spruce ply treated with two coats hard wax oil OR 1 coat of Cuprinol garden shades colour of choice + 1 coat of Treatex hardwax oil
- Shower room - 1 x 900mm x 1200mm low profile shower tray, mixer taps and bi-fold door with Multipanel of choice from Classic Standard range | 1 x standard pedestal basin with chrome taps | 1 x standard toilet
- Kitchenette - 1 x 3600mm solid wooden worktop treated with 3 coats of Treatex hard wax oil | Choice of doors from Howdens Allendale range | Units to include (from left to right) - 1 x 600mm drawer line base unit | 1 x 600mm built in electric oven and pan drawer below | 1 x 2 ring electric hob | 1 x 600mm drawer line base unit | 1 x 600mm sink base unit with stainless steel single bowl / drainer with chrome mixer tap | 1 x 500mm 3 x drawer unit | 1 x 600mm integrated Lamona fridge with ice box freezer compartment

Specifications

- Windows - Benlowe standard casement, high performance timber windows finished in colour of choice with chrome or black furniture - See attached document for warranty details | Bathroom 1200mm x 600mm top hung | Kitchen 1800mm x 1050mm, three panes, two openers | Living area end wall 900mm x 1350mm x 2, top hung | Living area back wall 900mm x 1350mm, top hung | Living area front wall 1200mm x 1350mm top hung | Bedroom 1800mm x 900mm, three panes x two openers | Mezzanine 1 x 750mm centre pivot round window | Mezzanine fixed pane mollycroft window to run the entire length of the cabin above the veranda
- Door - Benlowe French doors 3450mm x 2100mm opening inwards | finished in colour of choice with chrome or black furniture.
- Electrical package - 2 x pendant light | 2 x exterior light | 5 x double plug socket | 1 x shower light | 1 x bathroom light | 8 x spotlights | 1 x heated towel rail | necessary electric certificate
- Water and heating - Intergas combi boiler with necessary flues and ventilation | 3 x radiators in living area | 1 x radiator in bedroom | dual fuel towel rail in bathroom | Aga Wren Wood burner with slate hearth, all associated flues and fireproof backboard, vented and fitted | All necessary plumbing works with regulatory certificate
- Asgard metal gas cupboard for 2 x 47kg bottles to comply with regulations in ivory, green or brown

Price for design, manufacture & assembly

£89,950 + 5% VAT

This cabin would be manufactured in our Okehampton workshop, dis-assembled, transported and re-assembled on site. Delivery would be charged dependent on location and access. Groundworks and connection of services are not included.