

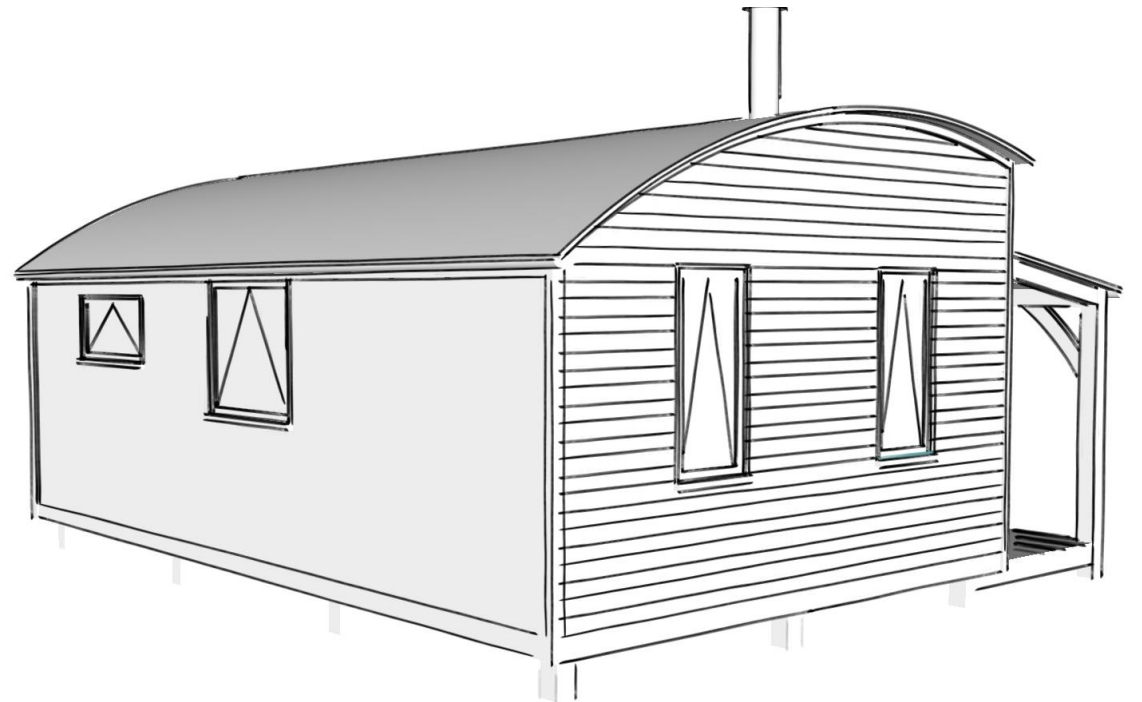
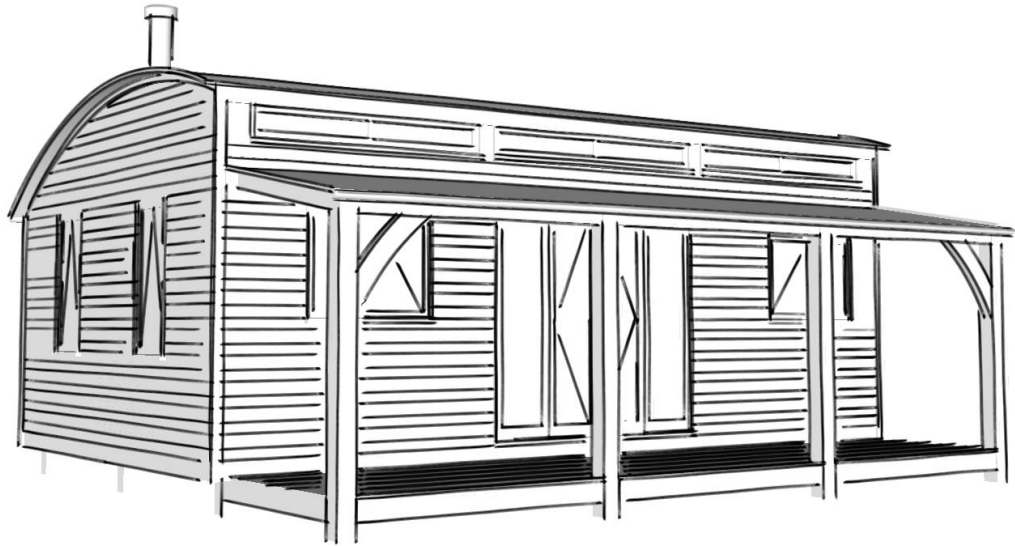
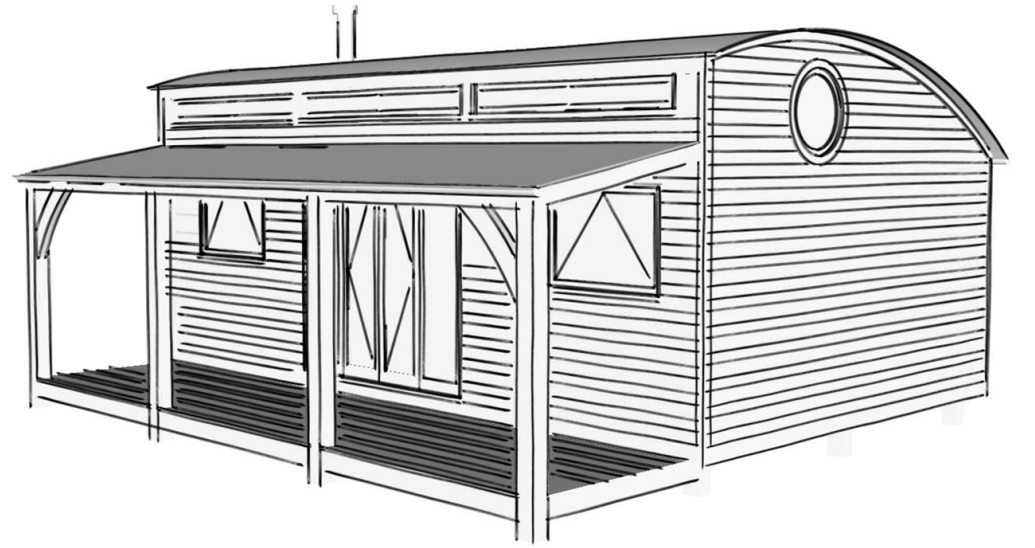
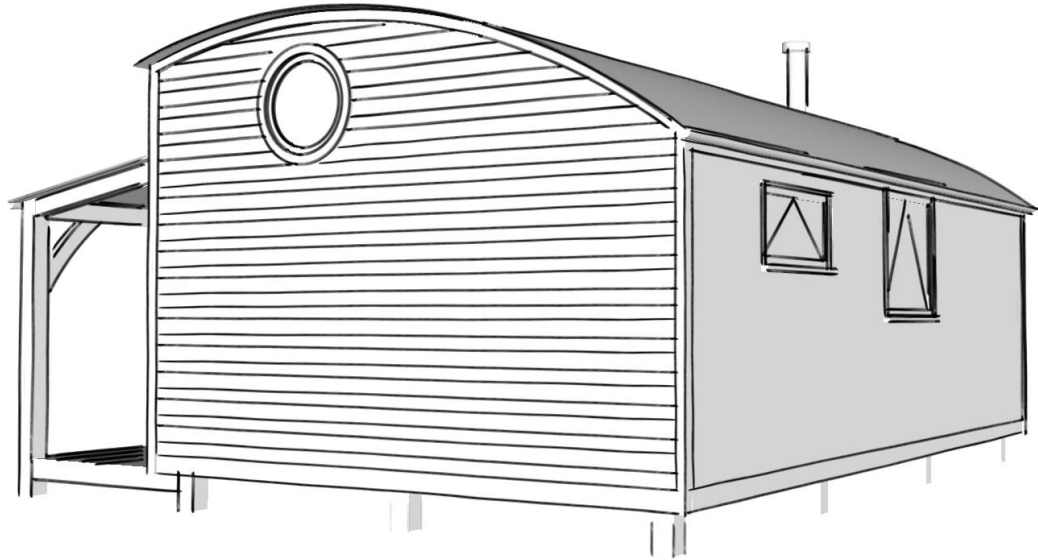


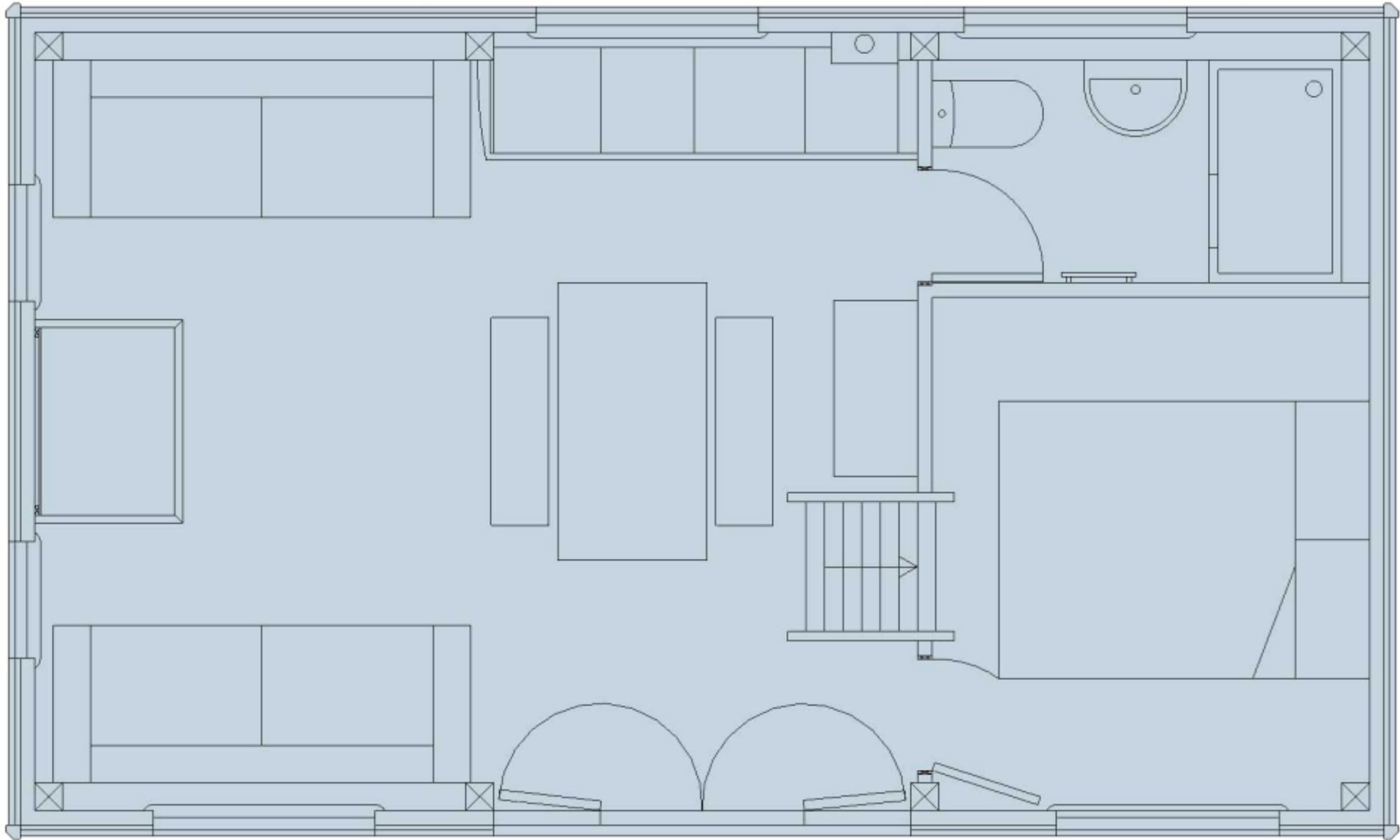
The Carpenter's Cabin



Based in the heart of Devon, The Cabin Company design and manufacture unique, stunning wagons, cabins and lodges from locally sourced, sustainable wood, ideal for living, holiday and work space. Our ethos is to provide high quality work, using beautiful local wood, for a fair and sensible price.

Our work is fully regulated, using professional contractors for all services and providing all the necessary certificates, offering peace of mind when purchasing a structure from us.









Specification

- 7.2m x 4.2m timber framed caravan made from local Douglas fir & larch
- 1.8m x 7.2m fully detachable solid timber frame veranda
- Mezzanine with molly croft windows + 1 centre pivot round window
- Roof constructed of Heavy duty laminate curved beams and purlins | 9mm softwood ply treated with 2 x coats hard wax oil OR 2 x coats Sadolin Superdec colour of choice | 100mm glass fibre insulation | breather membrane | curved, galvanised corrugated steel roof | Lindab galvanised guttering and downpipes
- Walls constructed of Heavy solid timber frame made using traditional mortis and tennon method | top of wall - 9mm softwood ply treated with 2 x coats hard wax oil OR 2 x coats Sadolin Superdec colour of choice | bottom of wall - Neatmatch boarding primed and painted with Dulux trade colour of choice | 70mm studs | 100mm glass fibre insulation | 9mm OSB boarding | breathable membrane | Ex32mm Douglas fir / larch Featheredge cladding treated with 2 x coats Cuprinol garden shades colour of choice
- Floor constructed of 9mm OSB boarding to underside | 125mm floor joists | 200mm glass fibre insulation | 18mm structural ply treated with 2 x coats hard wax oil (plus 2 x coats of Cuprinol colour of choice as an optional extra)
- Wash room 1 x shower | 1 x slim line pedestal basin with chrome taps | 1 x flushing toilet | Multipanel boarding from Classic range

Specification

- Windows standard casement, high performance timber windows | Fully factory finished in colour of choice with furniture of choice from standard range | double glazed
- Door double glazed timber French doors in colour of choice with furniture of choice from standard range.
- Kitchenette Solid wooden worktop chosen from stock in workshop, with choice of doors from Howdens Allendale range. Units to include 1 x 600mm integrated Lamorna fridge with ice box freezer compartment | 1 x 600mm sink base unit with stainless steel single bowl / drainer with mixer tap | 1 x 500mm drawer line base unit | 1 x integrated Spinflo Duplex gas oven with 2-ring electric hob above | 1 x 500mm pan drawer below
- Electrical package 2 x pendant light | 2 x exterior light | 8 x double plug socket (inc 6 x USB) | 6 x downlights | 8 x spotlights | 1 x dual fuel towel rail | necessary caravan landlord electric certificate
- Water and heating Intergas combi boiler with necessary flues and ventilation | 3 x radiators in living area 1 x radiator in bedroom | Hobbit 4KW woodburner with slate hearth, fireproof backboard, necessary vents and flues | All necessary plumbing works with regulatory caravan landlord certificate

Guide price for design, manufacture & assembly

£84,995 inc 5% VAT

This single unit caravan would be manufactured in our Okehampton workshop, flat packed, delivered and re-assembled on site. Delivery would be charged according to location. Groundworks and connection of services are not included.

www.thecabincompany.co.uk

The Cabin Company is the trading name of Barrel Top Wagons LTD